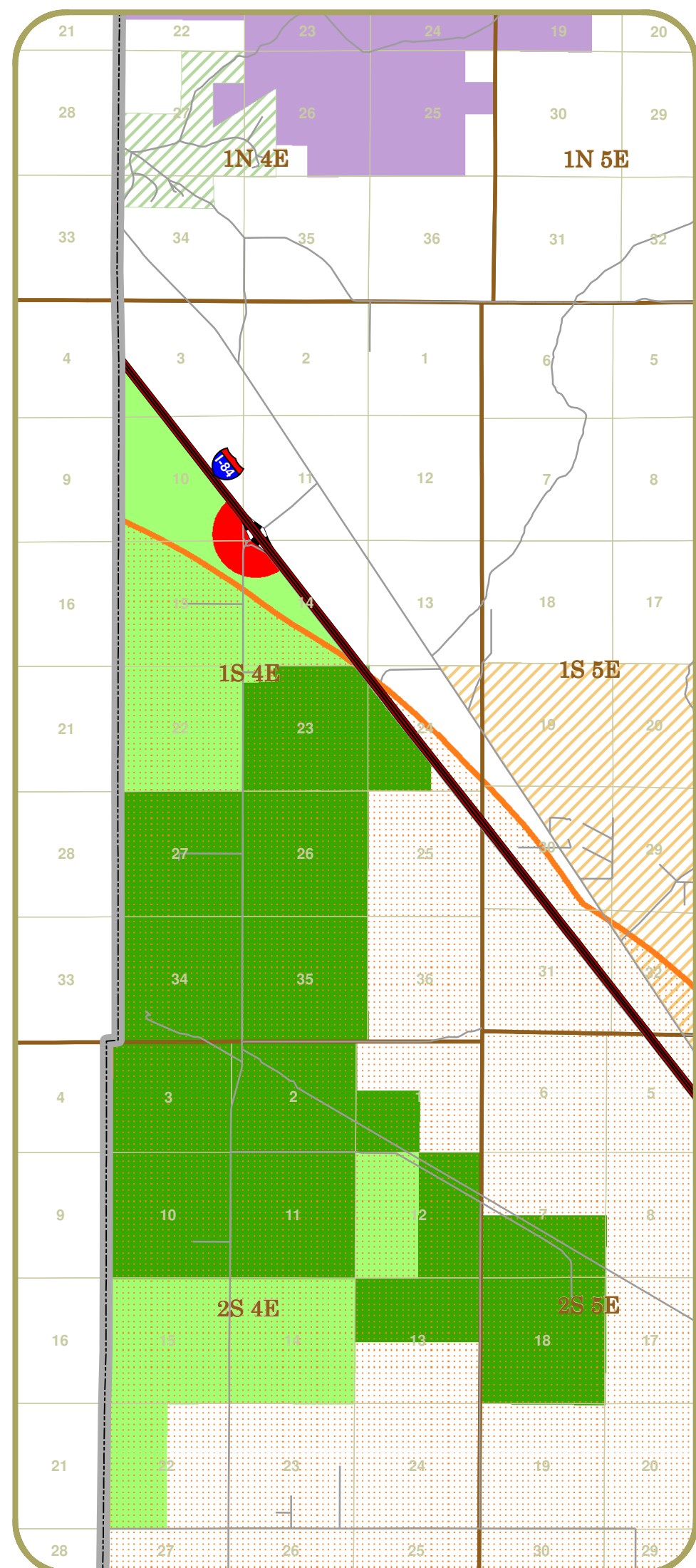
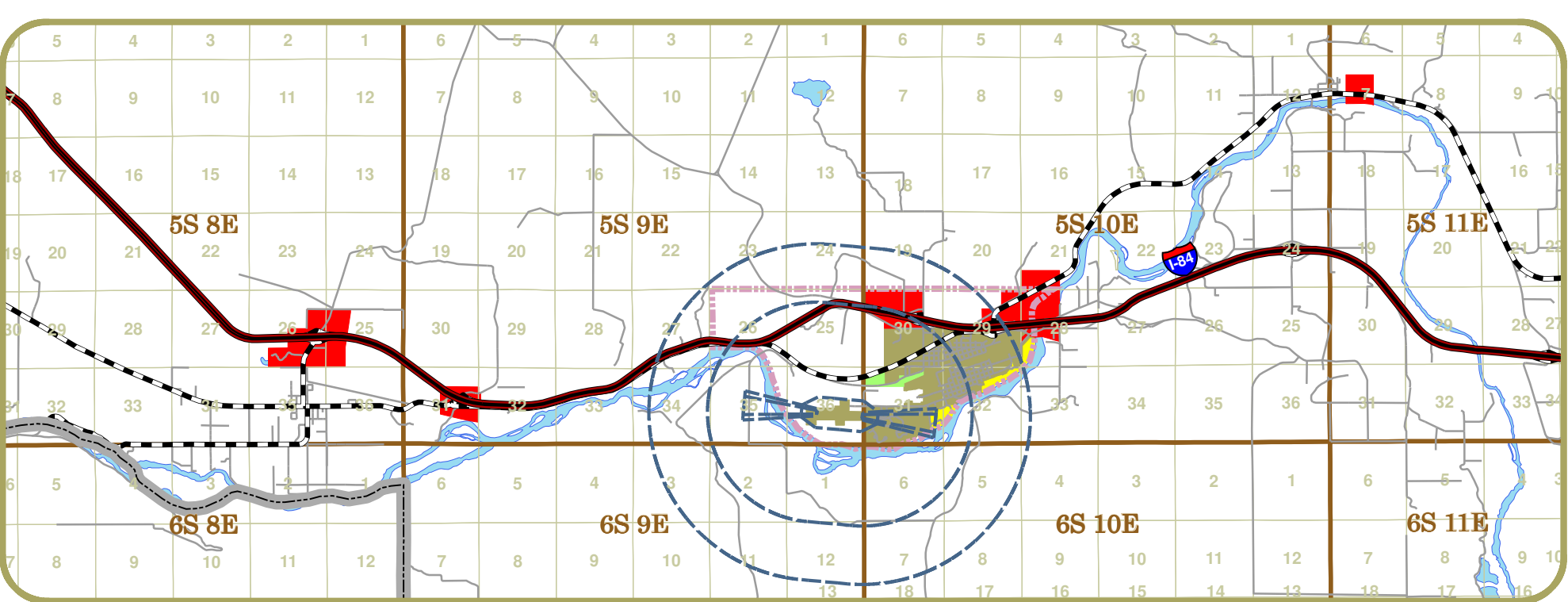
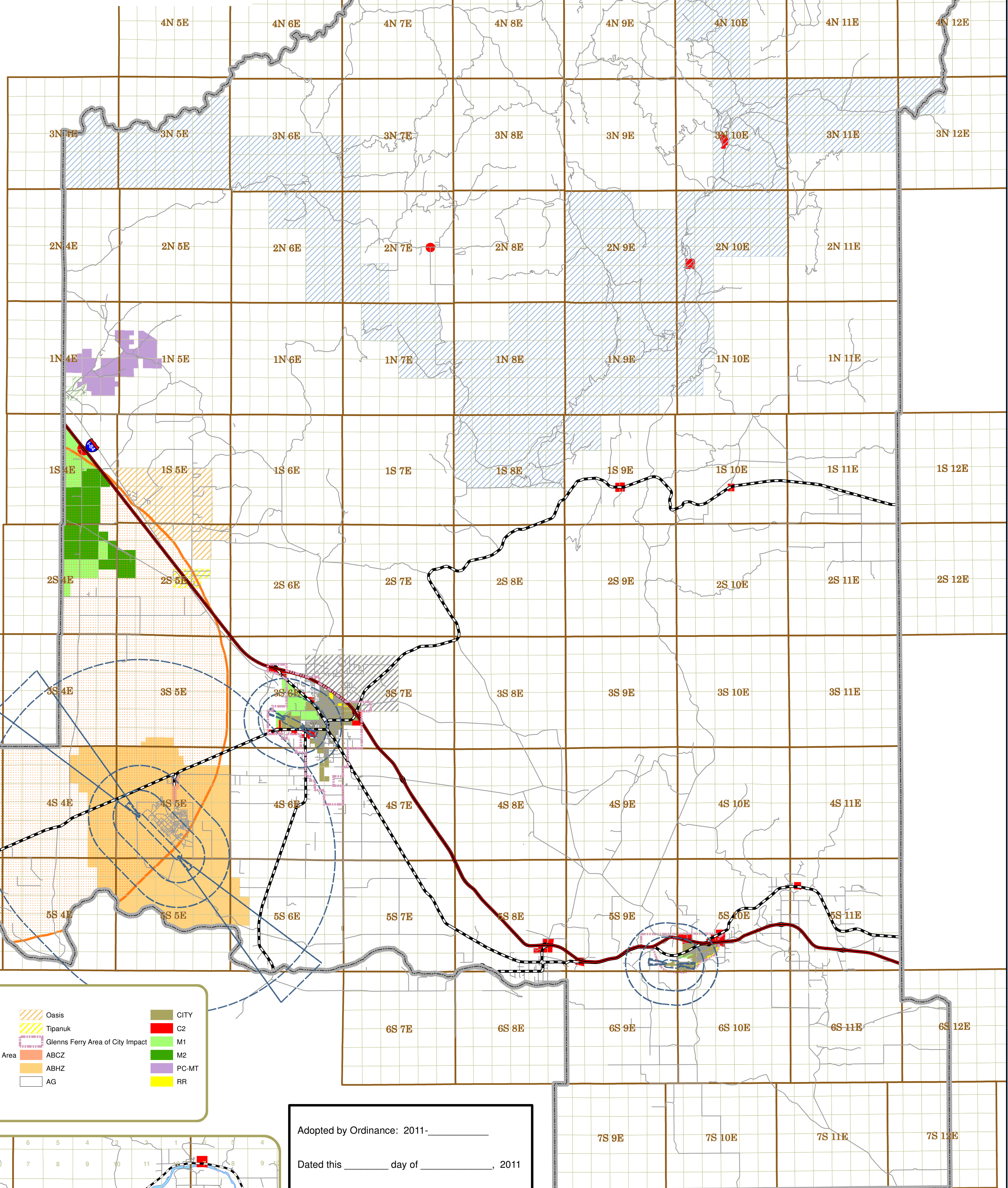


Mountain Home



Simco Road



Glenns Ferry

Legend			
Mountain Home Area of City Impact	Area of Critical Concern	Oasis	CITY
Airport Subzones	Chattin Flats	Tipanuk	C2
County Boundary	Mayfield CDD	Glenns Ferry Area of City Impact	M1
Interstate	Mountain Home Aquifer Recharge Area	ABCZ	M2
Major Roads	AG	ABHZ	PC-MT
Townships	AG	RR	RR
Sections			
Training Range Buffer			

Adopted by Ordinance: 2011-\_\_\_\_\_

Dated this \_\_\_\_\_ day of \_\_\_\_\_, 2011

By \_\_\_\_\_  
Arlen O. Shaw, Chairperson

By \_\_\_\_\_  
Albert Hofer, Commissioner

By \_\_\_\_\_  
Wesley R. Wootan, Commissioner

ATTEST:  
Barbara Steele, Clerk of Elmore County

Notes:

- This map was created from various Elmore County GIS sources. Elmore County does not accept liability with the accuracy of information portrayed on this map.
- The Wildfire Urban Interface ("WUI") is comprised of all areas of Elmore County minus those areas that are in a negotiated Area of City Impact, Oasis Rural Fire District & Chattin Flats Overlay. All development within the WUI must be in conformance with Chapter 12 of the Elmore County Zoning and Development Ordinance.
- Airport subzones are defined in Chapter 36 of the Elmore County Zoning and Development Ordinance and applicable only to those areas within Elmore County.
- Pursuant to section 6-8-15 of the Elmore County Zoning and Development Ordinance, the Elmore County Growth and Development Director shall have the authority to interpret zoning and overlay district boundaries in accordance with the Elmore County Zoning and Development Ordinance. Interpretation of districts may be appealed to the Commission and or Board.
- Unless otherwise described in legal descriptions or defined by the zoning map, zone boundaries shall be lot lines, the centerlines of streets and alleys, highway right of way lines, the centerline between the two main tracks of any railroad line, extended quarter section, half section or sections lines, contour lines, municipal corporate boundaries, centerlines or banks of streambeds or other bodies of water or noticeable points of change in natural landforms.